

Restorying the Landscape

An arts-based approach to a bird habitat restoration on an elementary school campus.

How can an an arts-based environmental education program contribute to students' understanding while restoring a bird habitat on a school campus?



**Deforestation threatens
the survival
of native species.**

Unused areas of school campuses present a valuable opportunity to educate students about the importance of reintroducing native plants to support local wildlife





Tolay Lake, North East oil on canvas, 2018

Literature- Theoretical

Nature Deficit Disorder, (Luov, 2005)

Eco-art Education -/Arts Based Environmental Education
American art educators calling for a transformative art pedagogy, based on the land art movement of the 1960's and 70's which could engage students in place-based environmental issues. (Blandy, Cogdon and Krug, 1988, Lankford, 1997, Graham 2007 Inwood, 2008)

European School, Van Broekel, Mantierre

Systems Theory

Redesign of structures for sustainability based on understanding

Natural systems. "Speaking the Language of Nature"
(Capra, 2005)

New Metaphors/Interbeing

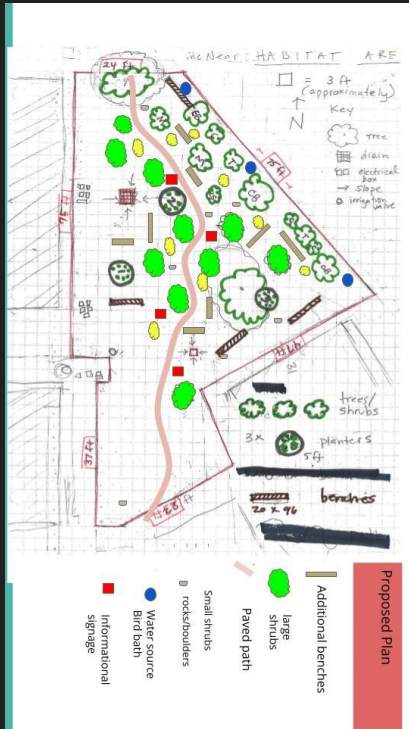
Calls for a new land-ethic in education, replacing the extraction model. The arts as a stimulus for cultural change(Orr, 1992, Sobel, 1997, Anderson)





Research Practioner

Stakeholders!!



Bob Tuttle - Sunrise Rotary Club
Kirsten Franklin McNear 4th Grade
Kerry Santia McNear 4th Grade
Camille Bossenbery, Former McNear Parent and originally planted Habitat area
Laurel Anderson, School Garden Network
Melissa Becker, McNear Principal
Ryan Kurada, SCOE
Anna Babarinde, SCOE
Catherine Sky, McNear Garden Teacher



Planting shrubs at **McNear Elementary** School, Petaluma, California, 1955

Restorying

Restoring -

The goal of habitat restoration is to identify disturbed habitats and restore the native **flora** and **fauna** that occur there to ensure the continued use of the land by both wildlife and humans.

→ Why is it important? ←

Storying

What stories have been told about this place?

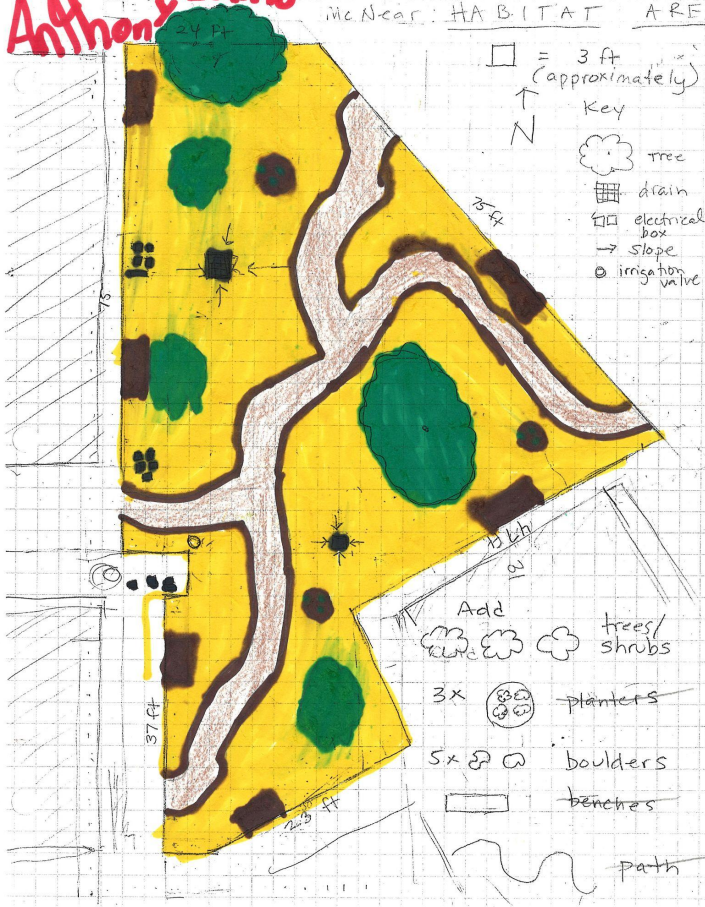
What is our experience of this place?

What is the purpose of this place?

<https://earth.google.com/web/@49.07514149,-163.35512095,-12996.59965519a,25623879.15391446d,35y,121.4271773h,0t,-0>

Anthony - AN5

McNear: HABITAT AREA



Maria

McNear

HABITAT AREA



room #



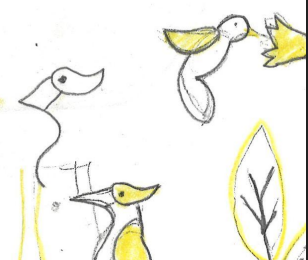
Appolonia
Gastot

Nu

2.Other Characters
(plants and
animals)



Words!



room #



My
Path

Appolonia
Gastot

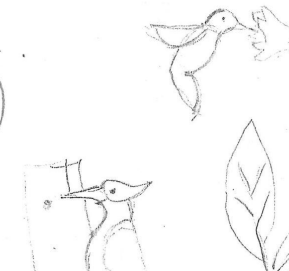
Nu

all the
I saw stuff

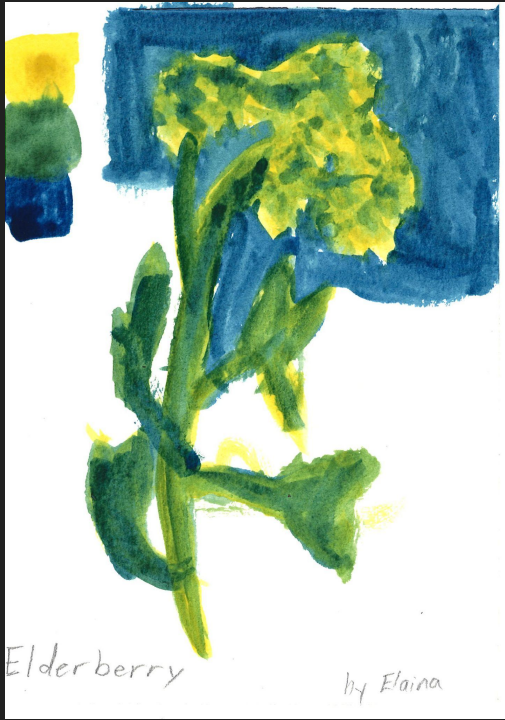
2.Other Characters
(plants and
animals)

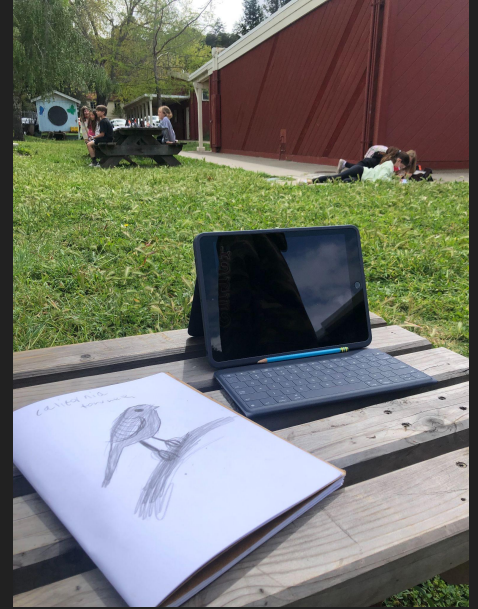
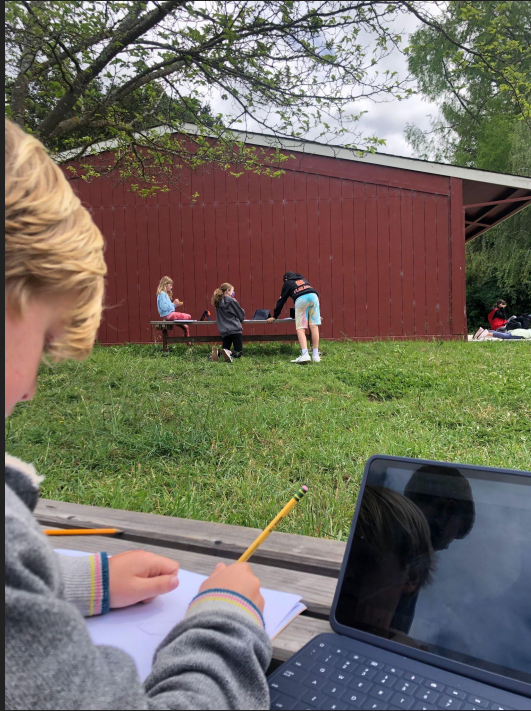


Words!









Signage

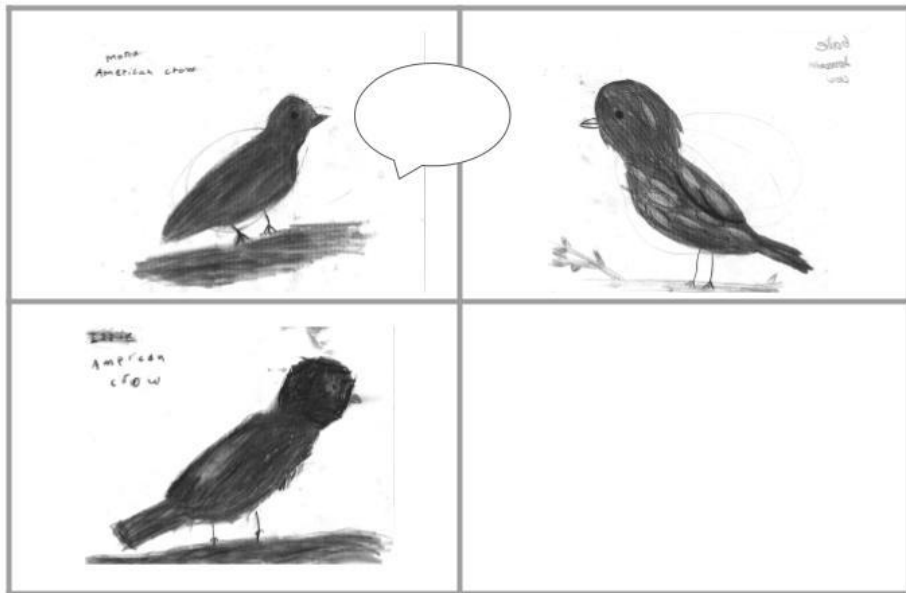
Informational signage is an essential element of the garden design as it provides students with an opportunity to educate the wider school community about the value of the habitat garden in demonstrating environmental principles.

As part of her thesis work in the masters of education program at Sonoma State University, Catherine Sky has designed curriculum to support learning in the habitat garden through arts-based environmental education.

Catherine plans to use seven weeks of upcoming Spring 2022 garden sessions with the 4th grade classes to create mosaic guideposts which illustrate data on bird species detected on the school campus

<https://soundscapes2landscape.org/>





Common Raven
Emma Stolz



♥ Stolz

Common Raven

Common Raven



Next Steps

- kids edit bird stories

Add text based on their research

Add plants

Submit drawings for printing on tiles

Paintings

Guideposts

Signage- find out about printing

Finish Plantings

Continue with installing Irrigation

communicate with Stakeholders

Figure out research question

Include field trip -

Fairfield Osborne

Or Straw

